

THIS IS THE YEAR THE WORLD GOT SMALLER.

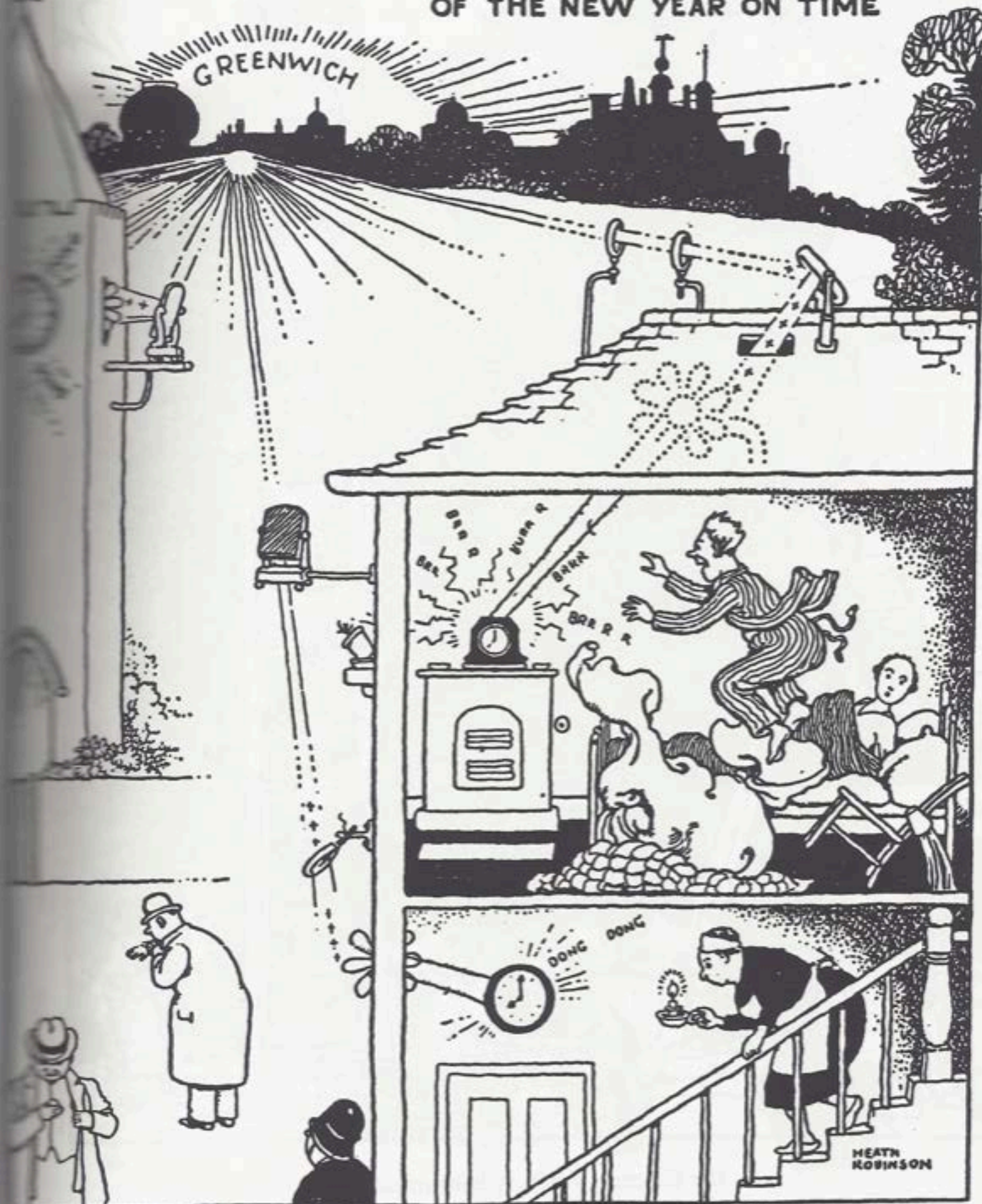


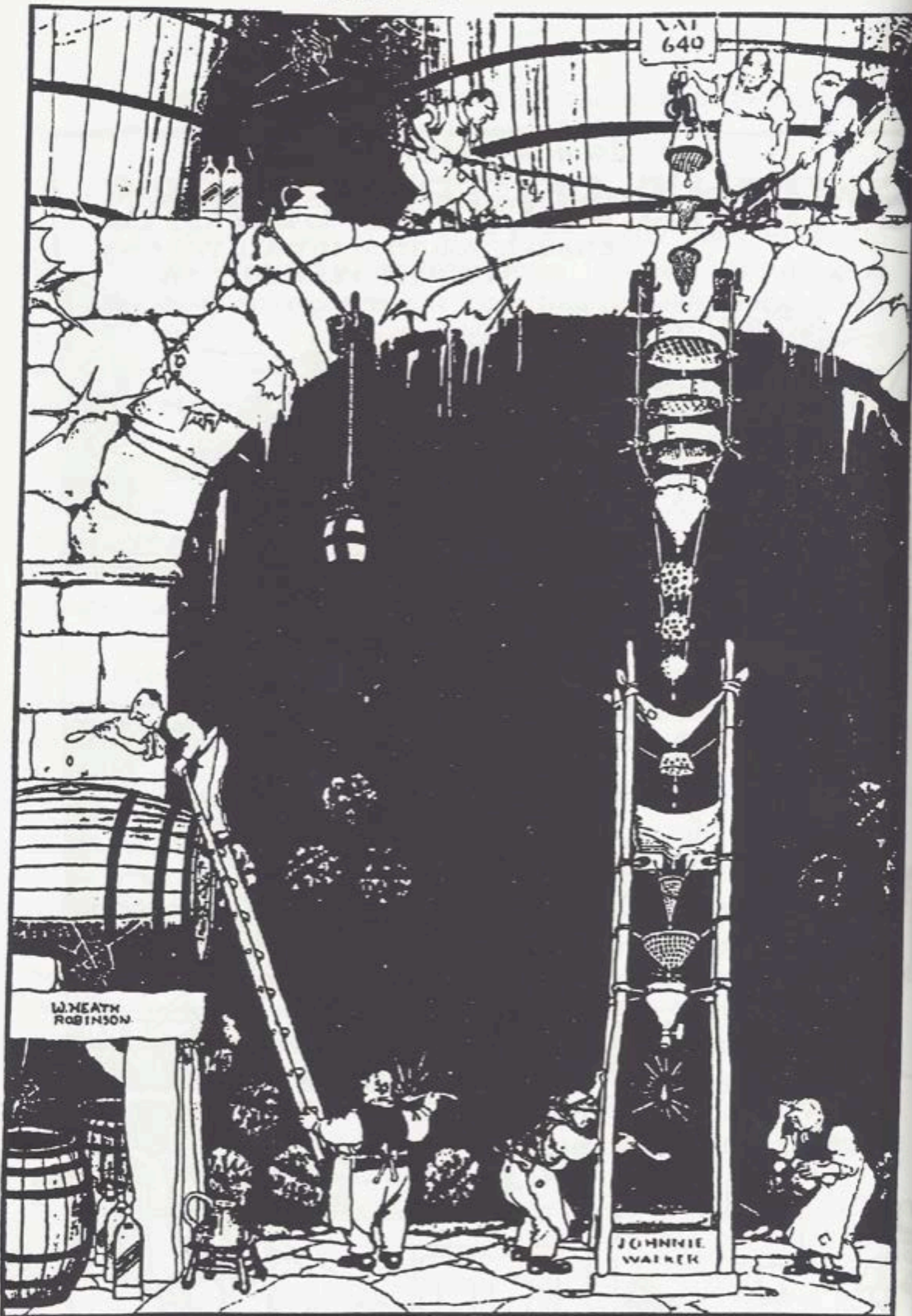
ALCATEL

PLUG IN AT GREENWICH

SMITH'S SECTRIC CLOCKS

ENABLE YOU TO START ALL THE DAYS
OF THE NEW YEAR ON TIME





In the Filtering Vaults at Kilmarnock



Sheet Systems



Extruders



Electronic Controls



Screw Technology



Blown Film Systems



Modernization Services



Process Knowledge



Profile Extrusion



Wire and Cable Systems

When it's hard to be in your shoes

we invite you to try some of ours.

Davis-Standard is the world's largest extruder manufacturer. To our customers, this holds some important benefits. Like immediate access to a universe processing knowledge second to none. And expert engineering advice

on how to improve production with the latest - custom designed - integrated systems.

If you'd like to enjoy such benefits, give us a call.

Once you do, you'll have taken a major step in the right direction.

For more information, enter 48 on reader service card

Davis-Standard
Division of Crompton & Knowles Corporation

#1 Extrusion Dr., Pawcatuck, CT 06379
(203) 589-1010 Telex: 986455
FAX: (203) 589-2952

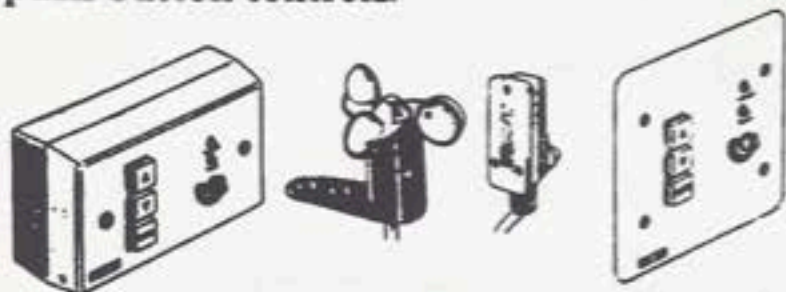
No One Beats Us In Extrusion

DON'T LEAVE HOME WITHOUT IT!!

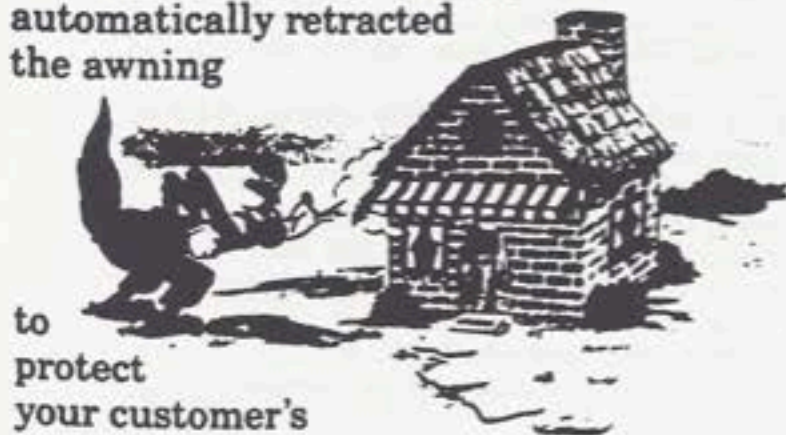


THE NEW SOMFY-MATIC™ II FOR RETRACTABLE AWNINGS

with modern new flush or surface mount push-button controls.



When your customer is away from home ... and damaging high winds are gusting ... your mind can be put at ease knowing that the SOMFY-MATIC™ II has automatically retracted the awning



to protect your customer's investment.

The SOMFY-MATIC™ II also provides your customer with enhanced indoor and outdoor living comfort by shading the home from bothersome sunglare and extreme solar heat.

On the outside, the retractable awning will extend to provide a comfortable, shaded area.

On the inside, your customer's furniture and carpeting will



be protected from fading while the room

temperature and associated HVAC costs can be lowered.

So add value, functionality and protection to your customer's home as you increase your sales and profits.



SOMFY SYSTEMS, INC.
2 SUTTON PLACE
EDISON, NJ 08817

NJ (201) 287-3600
US 1-800-22-SOMFY
CN 1-800-53-SOMFY

For more information contact your local awning supplier
or **SOMFY SYSTEMS, INC.**

Bayer: Expertise with Responsibility.

ANNEXE n° 7

**Medicines must be effective.
Our responsibility is to minimise
the side-effects.**



Even the most effective new medicines are of no use if there are unacceptable side-effects and risks. In the early experimental testing phase, certain questions are repeatedly asked. Does the substance have short or long term toxic effects? Could it cause cell proliferation? Can it cause deformity? Might it damage the genetic make-up?

We therefore devote vast sums of money and a great deal of time to producing a new medicine. It often takes ten years or longer. But however long it takes, we believe it is time well spent. For only a safe and effective medicine is a good medicine.



New active ingredients are tested in the laboratory.

If you would like to receive more information, please write to: Bayer AG, Public Relations Department (KV), W-5090 Leverkusen FRG. KJ 4393

Before medicines can be used in therapy, they have to be tested.

Bayer 

You hear a lot these days about how good plant life is for the environment.

About how every living plant removes carbon dioxide from the atmosphere, whilst at the same time replenishing it with oxygen.

But what happens when plants die?

They can provide fuel which is burnt as a power source. But the trouble is, they give off carbon dioxide in the process.

Coal and oil, for example, are fossil fuels formed out of decaying forests and

the like that were flourishing millions of years ago.

Burning them is believed, by many scientists, to contribute to an increase in the Greenhouse Effect, which may lead to global warming.

The Greenhouse Effect is a natural phenomenon where gases, including carbon dioxide and chlorofluorocarbons (CFCs) trap the sun's heat that would otherwise be radiated back into space.

Thus, the earth has warmed up by

about half a degree in the last 100 years. An increase of two degrees has been predicted in the next 100 years. This may not seem a lot, but it could be enough for glaciers or ice caps to melt and sea levels to rise.

Even the climate could get more than a little hot and uncomfortable.

What action can we take?

We should aim to minimise the amounts of Greenhouse gases released into the atmosphere. Governments are

already phasing out CFCs.

Further losses of tropical rainforests must be stemmed (they reduce CO₂ by absorbing it), and new trees planted.

Energy conservation must be further encouraged, and we must begin to look seriously at additional means of supplying our power. Fossil fuels won't last forever, and they're a major polluter of our atmosphere.

At British Nuclear Fuels, we believe nuclear power should continue to play

an important role in a balanced energy policy for this country.

Not only that, but because it generates practically none of the Greenhouse gases, it has an important role to play in the environment.

In fact, so sure are we of a nuclear future, that British Nuclear Fuels is investing over £1 million a day at Sellafield.

Of course, there are people who will try to plant seeds of doubt about nuclear power and how relevant it is to

the prevention of global warming.

Unfortunately, only time will tell.

But by then it might be too late.

If you'd like to know more about nuclear power write to British Nuclear Fuels, Information Services (GB), Risley, Warrington WA3 6AZ.

Better still, why not come and see us at the Sellafield Visitors Centre in West Cumbria. It's open 364 days a year.

BRITISH NUCLEAR FUELS



Did you know that rain has always been acidic?

This is because of the carbon dioxide and volcanic emissions of sulphur that are dissolved in the water.

However, what we call 'acid rain' today is a little different.

In fact, at Pitlochry in Scotland in 1974, the term took on a whole new

meaning. During a storm, rain fell that was somewhere between the acidity of lemon juice and vinegar.

A storm in a tea cup? More a sign of the times.

As we burn more fossil fuels in power stations, factories, vehicles and homes, we release more sulphur and nitrogen oxides into the atmosphere.

These dissolve in the rainwater to form acids. And down they come as rain.

Although it doesn't have a direct effect on us, it does affect trees, lakes, fish, fertile green land and buildings.

So how can we stop it?

We must do what we can to clean up emissions from all sources. For instance, special desulphurisation

equipment can be installed to existing fossil fuel power stations, or included in the designs of new ones.

New, lean-burn car engines, catalytic converters, and changes in industrial processes can all help. And so, too, can alternative energy sources like nuclear power.

Nuclear Power doesn't produce acid

generating gases. So it does not cause acid rain. And it generates practically none of the gases which are known to contribute to the Greenhouse Effect.

Hence, we at British Nuclear Fuels believe that nuclear power has a role to play in a balanced energy programme for the future.

If you'd like to know more about

nuclear power write to British Nuclear Fuels, Information Services (AR), Risley Warrington WA3 6AS.

Better still, why not come and see us at the Sellafield Visitors Centre in West Cumbria. It's open 364 days a year. Come acid rain or shine.

BRITISH NUCLEAR FUELS